



# MONTHLY MEMBERSHIP PROGRESS REPORT

District A 5

Results as of: 10/31/2018

GMT: CHRIS LEWIS

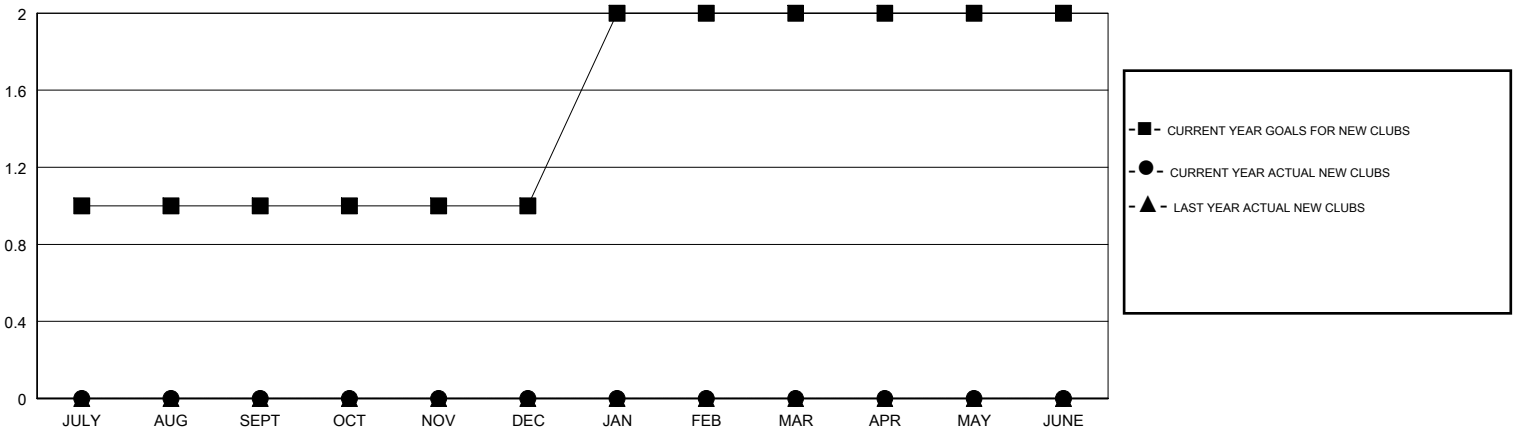
LOCATION ONTARIO

GMT CA

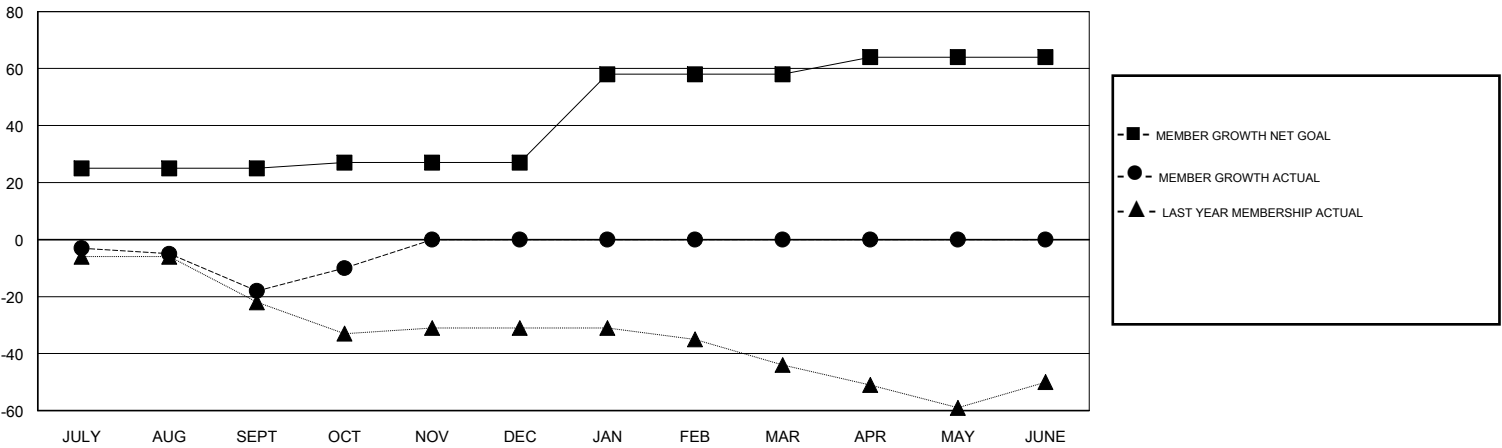
Clubs			
RESULTS FOR 2018-2019			
QUARTER	NEW CLUB GOAL	NEW CLUBS	DROPPED CLUBS
JULY/AUG/SEPT	1	0	0
OCT/NOV/DEC	0	0	0
JAN/FEB/MAR	1	0	0
APR/MAY/JUNE	0	0	0

Members			
RESULTS FOR 2018-2019			
QUARTER	MEMBER GROWTH NET GOAL	MEMBER GROWTH ACTUAL	DROPPED MEMBERS ACTUAL (including transfers)
JULY/AUG/SEPT	25	19	33
OCT/NOV/DEC	2	34	21
JAN/FEB/MAR	31	0	0
APR/MAY/JUNE	6	0	0

GOALS AND ACTUAL NEW CLUBS CUMULATIVE



GOALS AND ACTUAL MEMBERS CUMULATIVE



DROPPED CLUBS: 0	16 CLUBS OF 53 ADDED 1 OR MORE NEW MEMBERS	<u>GENDER DISTRIBUTION</u> MALE 699 (57.44%) FEMALE 518 (42.56%) Women Percentage Fiscal Year Goal: 48%
DROPPED MEMBERS DECEASED 6 CLUB CANCELLED 0 OTHER 48 TOTAL 54	<a href="#">CLICK HERE FOR CUMULATIVE MEMBERSHIP DATA</a>	TOTAL FAMILY UNIT MEMBERS 216 FAMILY MEMBERS PAYING HALF DUES 109